

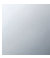


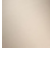


CL.1 Bocca vasca montaggio a muro - Cromato

CL.1

13 801 705



- sporgenza 205 mm
- Getto squadrato formato da 55 getti singoli
- diametro foro 37 mm
- ingresso 1/2"
- montaggio con attacco rapido
- portata max 24,6 l/min a una pressione idraulica di 3 bar

	Cromato	13 801 705-00
	Platinato spazzolato	13 801 705-06
	Dark Chrome	13 801 705-19
	Champagne spazzolato (Oro 22k)	13 801 705-46
	Champagne (Oro 22k)	13 801 705-47
	Dark Platinum spazzolato	13 801 705-99

Prodotti complementari



- raccordo angolare ad incasso - 35 085 970 90**
- Profondità d'incasso max. 163 mm
 - profondità d'incasso min. 90 mm

13 801 705

mm [inches]

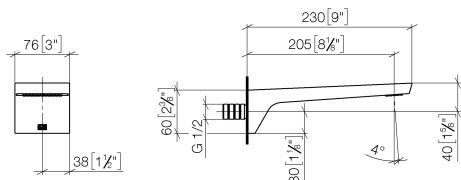
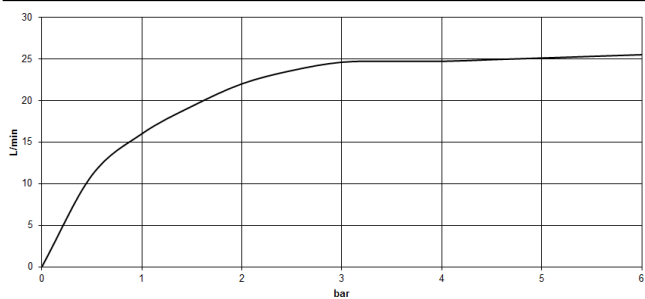


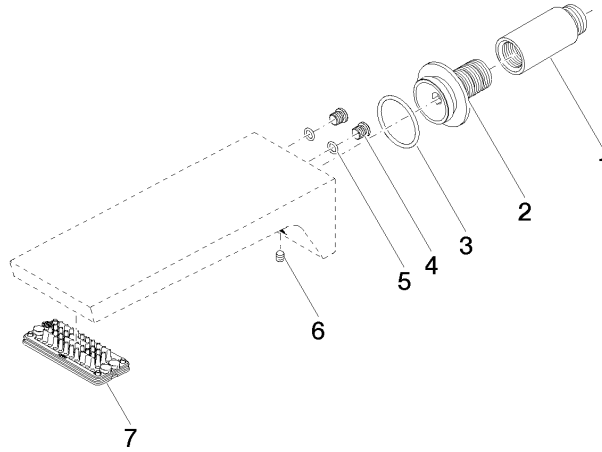
Diagramma di portata



Certificati

WRAS_1512012. LGA_28683. IAPMO_4976 (6).

13 801 705



Elenco delle parti di ricambio

N.	Codice articolo	Denominazione	Quantità necessaria	Tempo di produzione
1	09 24 03 081 10 90	prolunga	1	2
2	09 24 03 180 90	ugello	1	2
3	09 14 10 119 90	guarnizione	1	2
4	09 31 20 027 10-00	tappo	2	10
5	09 14 10 132 90	guarnizione	2	2
6	90 31 11 004 00 90	perno	1	2
7	90 11 02 299 00 90	rompigetto	1	2